

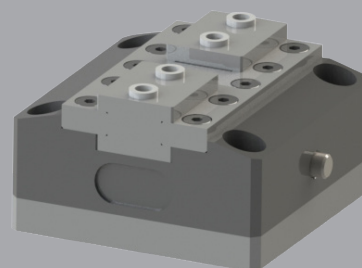


Self-centering vise MMC 65 2-Jaw

MMC is a mechanically actuated vise for easy installation. It can be applied in machine tools and assembly machines. The spring actuated clamping mechanism allows to save on hydraulic or pneumatic supply systems.

Advantages

- Clamping actuated by springs. Opening by pushing a button.
- Variable gripping force depending of spring compression.
- All functional parts are hardened and ground to ensure a high repeatability.
- Low profile: maximum use of the machine room.
- Base jaws interface with centering sleeves.



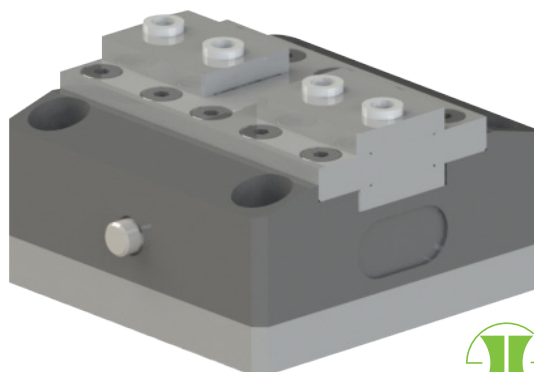
SPECIFICATIONS

Model	Stroke Per Jaw	Theoretical operating closing force per jaw	Total Theoretical operating closing force per jaw	Weight	Repeatability
MMC 65	5 mm	153-208 N	306-416 N	0.15 kg	±0.03 mm
	0.2 in	34-47 lb	69-94 lb	0.33 lb	±0.001 in

Working Temperature **5 - 60 °C (41 - 140 °F)**

Noise Emission (Sound Pressure) **≤ 70 dB(A) in any direction**

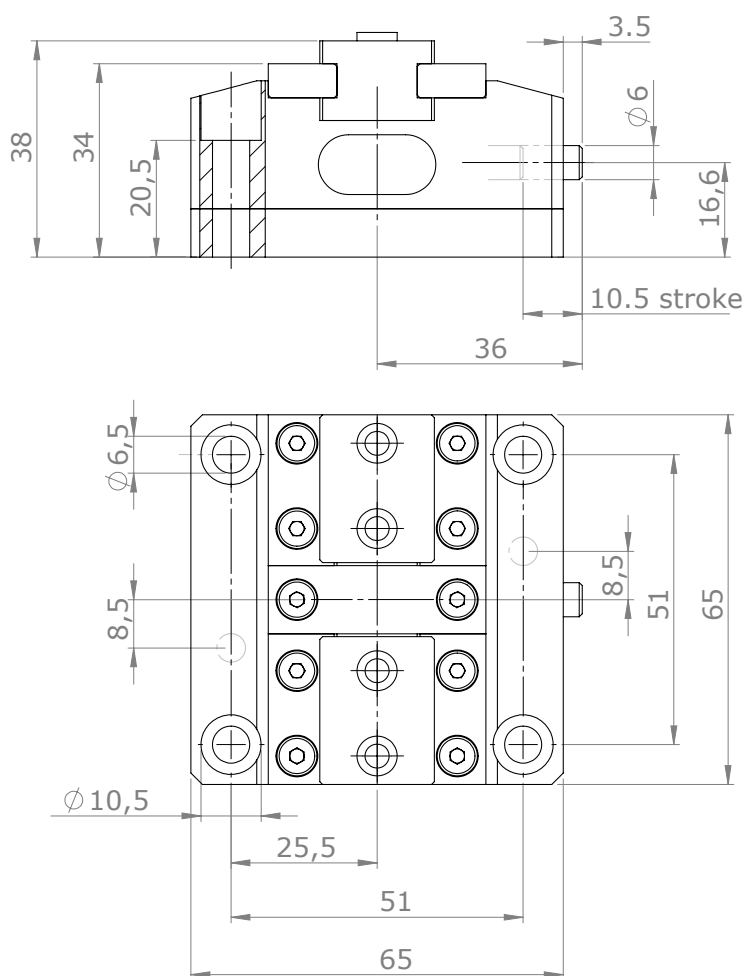
DIAGRAM



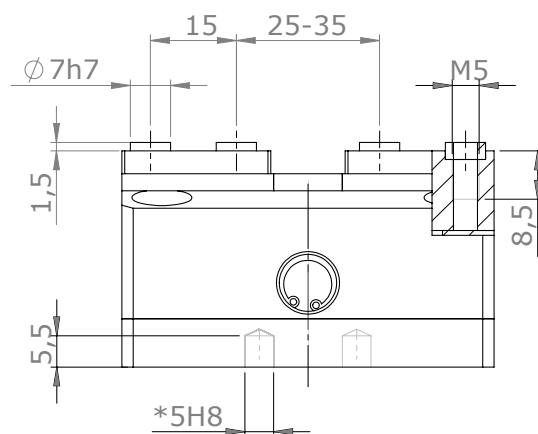
For a better operation of the vise please consider the distance between the clamping point and the top surface of the jaws.

PRODUCT INFORMATION

MMC 65 2-Jaw



*Finished holes on request



* Dimensions are in millimeters (inches).

** All dimensions are descriptive and subject to variation for technical upgrading. We reserve the right to make variations without prior notification



Applied Robotics
648 Saratoga Road
Glenville, NY 12302 USA
Tel. +1 518 384 1000 Fax +1.5183841200
info@appliedrobotics.com
www.appliedrobotics.com



EFFECTO GROUP S.p.A.
Via Roma, 141/143
28017 San Maurizio d'Opaglio (NO) - Italy
Tel. +39 0322 96142 Fax +39 0322 967453
info@effectogroup.com
www.effectogroup.com

