

Pneumatic Rubber Pickers

BLQ-I

BLQ-I is a rubber gripper featuring an inflatable rubber bladder construction that allows a single model to manipulate a great number of shapes.

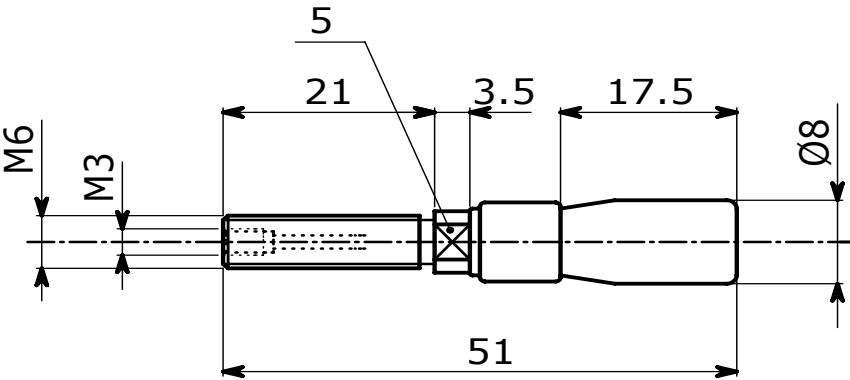
Advantages

- The BLQ-I can increase its diameter by as much as 1.86 times its deflated shape allowing for one gripper to handle multiple part sizes.
- Delicate handling by controlling the amount of pressure within the bladder.
- Soft and secure touch even with heavy loads thanks to the distribution of the holding force over a large surface area.
- Non-marring contact due to the soft touch of rubber and air, especially suitable for glass and plastic objects.
- Wide size range, handling objects with inner diameter from 8.5 to 105mm.
- No lubrication required.
- Long life even in dusty environments due to lack of seals or bearings.



EFFECTO
GROUP

BLQ 8.5-10I



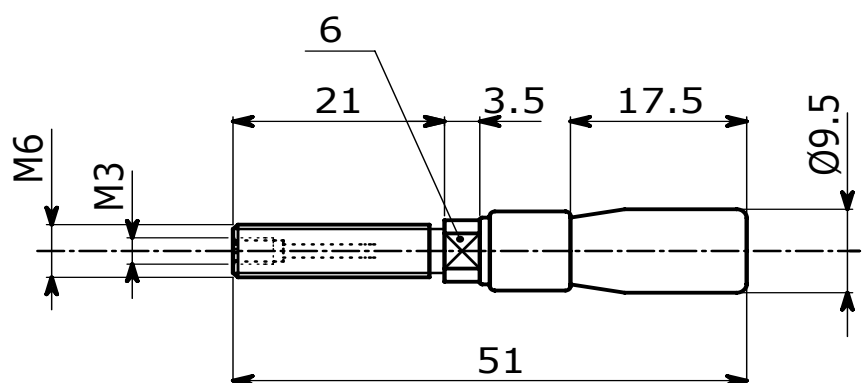
| | | BLQ 8.5-10I | |
|----------------------------|------------|------------------------|----------------------|
| Working diameter range | mm in | min 8.50 0.33 | max 10.00 0.39 |
| Rubber material | | Neoprene | |
| Rubber bladded length | mm in | 17 0.67 | |
| Deflated diameter | mm in | 8 0.31 | |
| Max restricted pressure | bar psi | 4 55 | |
| Max unrestricted pressure* | bar psi | 1.8 25 | |
| Load capability** | kg lb | 1.5 - 0.2 3.3 - 0.3 | |
| Weight | g oz | 8 0.5 | |
| Ambient temperature | °C °F | 0 / 50 32 / 122 | |

*Preconditioning: end effector must be inflated unrestricted at maximum recommended working pressure for max 30 cycles

**Load capability is evaluated in the working diameter range at maximum allowed pressure

Open/Close Diagram





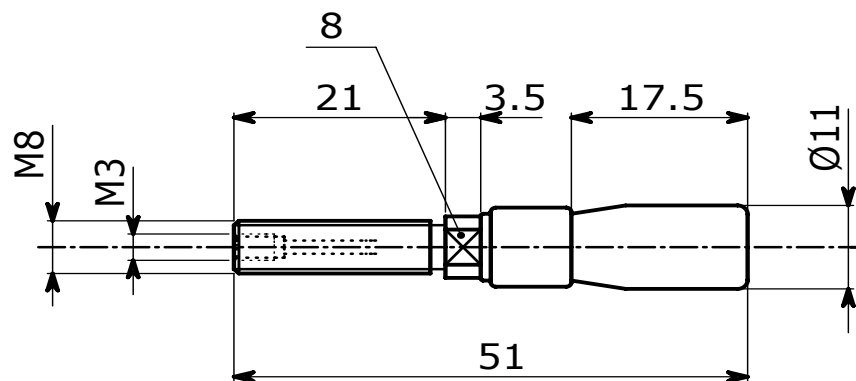
| | | BLQ 10-12I | |
|----------------------------|------------|------------------------|----------------------|
| Working diameter range | mm in | min 10.00 0.39 | max 13.00 0.51 |
| Rubber material | | Neoprene | |
| Rubber bladded length | mm in | 17 0.67 | |
| Deflated diameter | mm in | 9 0.35 | |
| Max restricted pressure | bar psi | 4 55 | |
| Max unrestricted pressure* | bar psi | 1.8 25 | |
| Load capability** | kg lb | 1.5 - 0.2 3.4 - 0.5 | |
| Weight | g oz | 12 0.5 | |
| Ambient temperature | °C °F | 0 / 50 32 / 122 | |

*Preconditioning: end effector must be inflated unrestricted at maximum recommended working pressure for max 30 cycles

**Load capability is evaluated in the working diameter range at maximum allowed pressure

Open/Close Diagram





| | | BLQ 12-17I | |
|----------------------------|------------|----------------------|----------------------|
| Working diameter range | mm in | min 12.00 0.47 | max 17.00 0.67 |
| Rubber material | | Neoprene | |
| Rubber bladded length | mm in | 17 0.67 | |
| Deflated diameter | mm in | 11 0.43 | |
| Max restricted pressure | bar psi | 4 55 | |
| Max unrestricted pressure* | bar psi | 1.8 25 | |
| Load capability** | kg lb | 3 - 1 7 - 3 | |
| Weight | g oz | 17 0.5 | |
| Ambient temperature | °C °F | 0 / 50 32 / 122 | |

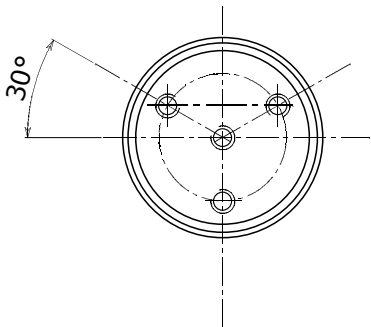
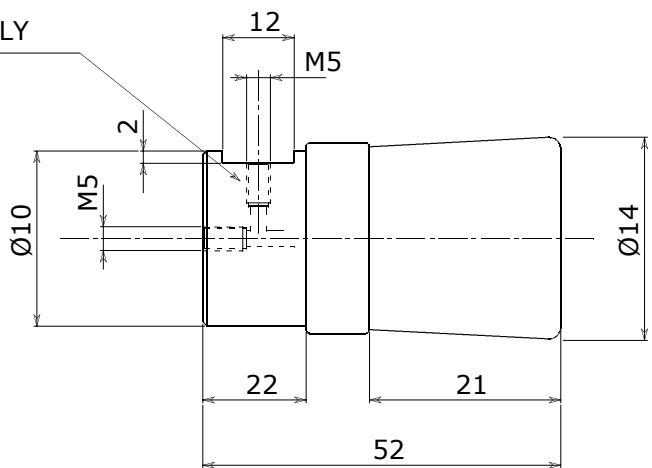
*Preconditioning: end effector must be inflated unrescticted at maximum recommended working pressure for max 30 cycles

**Load capability is evaluated in the working diameter range at maximum allowed pressure

Open/Close Diagram



AIR SUPPLY



| | | BLQ 16-211 | |
|----------------------------|------------|----------------------|----------------------|
| Working diameter range | mm in | min 16.00 0.63 | max 21.00 0.83 |
| Rubber material | | Neoprene | |
| Rubber bladded length | mm in | 21 0.83 | |
| Deflated diameter | mm in | 14 0.55 | |
| Max restricted pressure | bar psi | 5 70 | |
| Max unrestricted pressure* | bar psi | 1.8 25 | |
| Load capability** | kg lb | 5 - 3 11 - 7 | |
| Weight | g oz | 28 1 | |
| Ambient temperature | °C °F | 0 / 50 32 / 122 | |

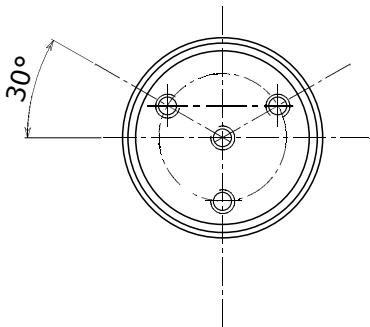
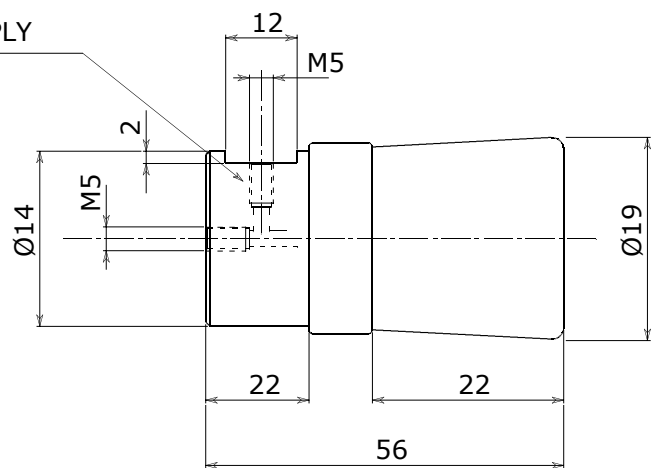
*Preconditioning: end effector must be inflated unrestricted at maximum recommended working pressure for max 30 cycles

**Load capability is evaluated in the working diameter range at maximum allowed pressure

Open/Close Diagram



AIR SUPPLY



BLQ 21-271

| | | BLQ 21-271 | | BLQ 21-271S | |
|----------------------------|------------|----------------------|----------------------|------------------------|----------------------|
| Working diameter range | mm in | min 20.00 0.79 | max 27.00 1.06 | min 22.00 0.87 | max 25.00 0.98 |
| Rubber material | | Neoprene | | Silicone | |
| Rubber bladded length | mm in | 22 0.87 | | 22 0.87 | |
| Deflated diameter | mm in | 19 0.75 | | 20 0.79 | |
| Max restricted pressure | bar psi | 5 70 | | 1.8 25 | |
| Max unrestricted pressure* | bar psi | 2.4 35 | | 1 15 | |
| Load capability** | kg lb | 7 - 4 16 - 7 | | 1 - 0.23 2.2 - 0.5 | |
| Weight | g oz | 60 2 | | 60 2 | |
| Ambient temperature | °C °F | 0 / 50 32 / 122 | | -30 / 160 -22 / 320 | |

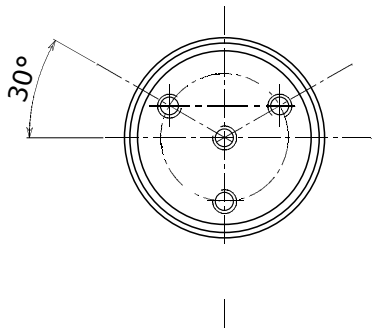
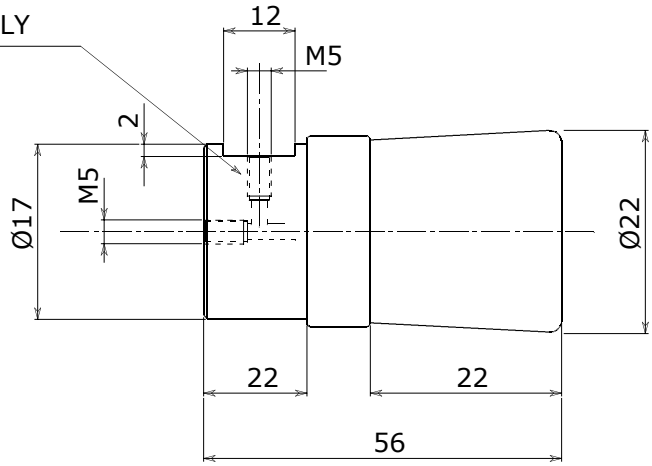
*Preconditioning: end effector must be inflated unrestricted at maximum recommended working pressure for max 30 cycles

**Load capability is evaluated in the working diameter range at maximum allowed pressure

Open/Close Diagram



AIR SUPPLY



| | | BLQ 24-32I | | BLQ 24-32IS | |
|----------------------------|------------|----------------------|----------------------|------------------------|----------------------|
| Working diameter range | mm in | min 23.00 0.91 | max 32.00 1.26 | min 22.00 0.87 | max 25.00 0.98 |
| Rubber material | | Neoprene | | Silicone | |
| Rubber bladded length | mm in | 22 0.87 | | 22 0.87 | |
| Deflated diameter | mm in | 22 0.87 | | 23 0.91 | |
| Max restricted pressure | bar psi | 5 70 | | 1.8 25 | |
| Max unrestricted pressure* | bar psi | 2.4 35 | | 1 15 | |
| Load capability** | kg lb | 10 - 4 23 - 8 | | 1.5 - 0.2 3.3 - 0.4 | |
| Weight | g oz | 85 3 | | 85 3 | |
| Ambient temperature | °C °F | 0 / 50 32 / 122 | | -30 / 160 -22 / 320 | |

*Preconditioning: end effector must be inflated unrestricted at maximum recommended working pressure for max 30 cycles

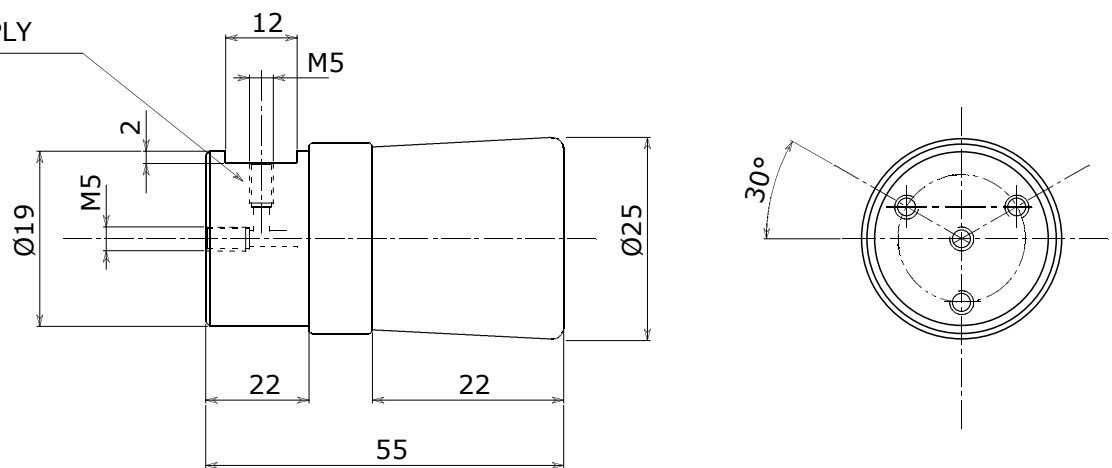
**Load capability is evaluated in the working diameter range at maximum allowed pressure

Open/Close Diagram



BLQ 28-36I

AIR SUPPLY



BLQ 28-36I

| Working diameter range | mm in | min 26.00 1.02 | max 40.00 1.57 |
|----------------------------|------------|----------------------|----------------------|
| Rubber material | | Neoprene | |
| Rubber bladded length | mm in | 22 0.87 | |
| Deflated diameter | mm in | 25 0.98 | |
| Max restricted pressure | bar psi | 5 70 | |
| Max unrestricted pressure* | bar psi | 2.4 35 | |
| Load capability** | kg lb | 14 - 2 31 - 5 | |
| Weight | g oz | 105 3.5 | |
| Ambient temperature | °C °F | 0 / 50 32 / 122 | |

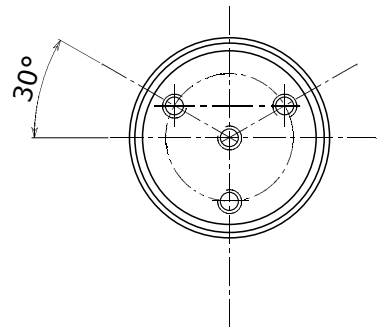
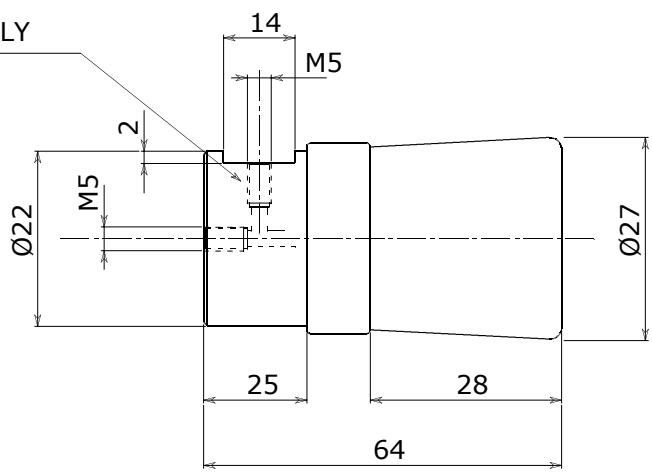
*Preconditioning: end effector must be inflated unrestricted at maximum recommended working pressure for max 30 cycles

**Load capability is evaluated in the working diameter range at maximum allowed pressure

Open/Close Diagram



AIR SUPPLY



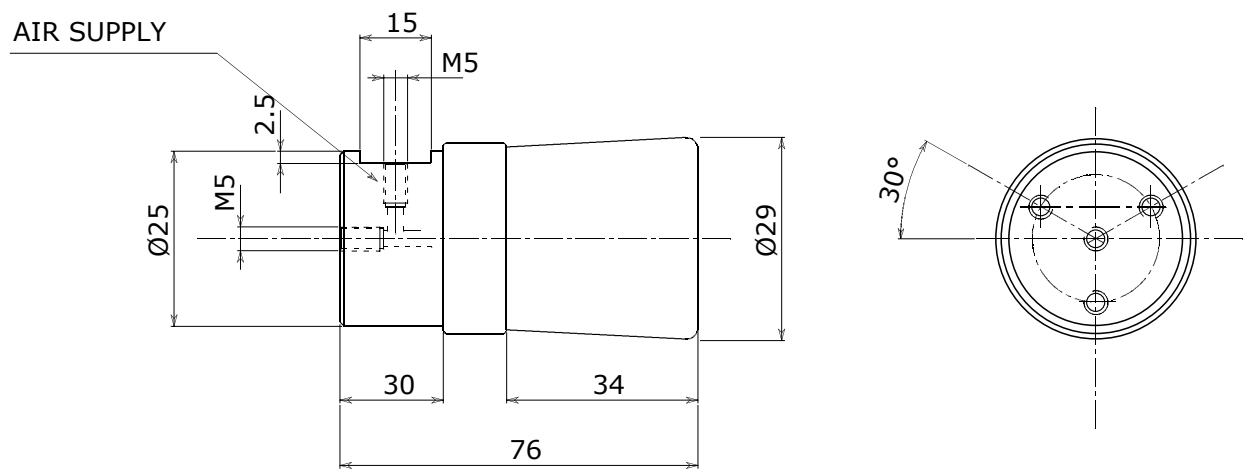
| | | BLQ 30-44I | | BLQ 30-44IS | |
|----------------------------|------------|----------------------|----------------------|------------------------|----------------------|
| Working diameter range | mm in | min 30.00 1.18 | max 44.00 1.73 | min 32.00 1.26 | max 40.00 1.57 |
| Rubber material | | Neoprene | | Silicone | |
| Rubber bladded length | mm in | 28 1.10 | | 29 1.14 | |
| Deflated diameter | mm in | 28 1.10 | | 29 1.14 | |
| Max restricted pressure | bar psi | 5 70 | | 1.8 25 | |
| Max unrestricted pressure* | bar psi | 2.4 35 | | 1 15 | |
| Load capability** | kg lb | 14 - 7 30 - 15 | | 2.5 - 0.6 5.5 - 1.3 | |
| Weight | g oz | 160 5.5 | | 165 6 | |
| Ambient temperature | °C °F | 0 / 50 32 / 122 | | -30 / 160 -22 / 320 | |

*Preconditioning: end effector must be inflated unrestricted at maximum recommended working pressure for max 30 cycles
**Load capability is evaluated in the working diameter range at maximum allowed pressure

Open/Close Diagram



BLQ 32-52I



| | | BLQ 32-52I | | BLQ 32-52IS | |
|----------------------------|------------|----------------------|----------------------|------------------------|----------------------|
| Working diameter range | mm in | min 32.00 1.26 | max 54.00 2.13 | min 34.00 1.34 | max 42.00 1.65 |
| Rubber material | | Neoprene | | Silicone | |
| Rubber bladded length | mm in | 34 1.34 | | 32 1.26 | |
| Deflated diameter | mm in | 29 1.14 | | 31 1.22 | |
| Max restricted pressure | bar psi | 5 70 | | 1.8 25 | |
| Max unrestricted pressure* | bar psi | 2.4 35 | | 0.8 12 | |
| Load capability** | kg lb | 25 - 9 55 - 20 | | 3 - 5 8 - 2 | |
| Weight | g oz | 245 8.5 | | 110 4 | |
| Ambient temperature | °C °F | 0 / 50 32 / 122 | | -30 / 160 -22 / 320 | |

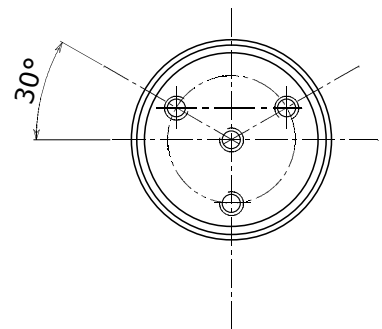
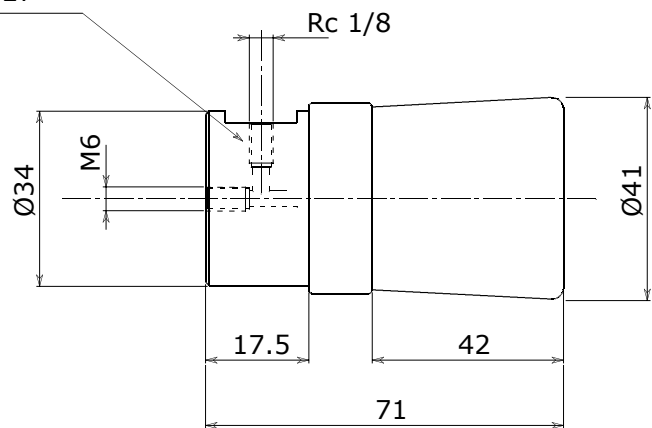
*Preconditioning: end effector must be inflated unrestricted at maximum recommended working pressure for max 30 cycles

**Load capability is evaluated in the working diameter range at maximum allowed pressure

Open/Close Diagram



AIR SUPPLY



| | | BLQ 45-65I | | BLQ 45-65IS | |
|----------------------------|------------|----------------------|----------------------|------------------------|----------------------|
| Working diameter range | mm in | min 45.00 1.77 | max 65.00 2.56 | min 46.00 1.81 | max 58.00 2.28 |
| Rubber material | | Neoprene | | Silicone | |
| Rubber bladded length | mm in | 42 1.65 | | 42 1.65 | |
| Deflated diameter | mm in | 38 1.50 | | 42 1.65 | |
| Max restricted pressure | bar psi | 5 70 | | 1.8 25 | |
| Max unrestricted pressure* | bar psi | 2.4 35 | | 0.8 12 | |
| Load capability** | kg lb | 35 - 11 77 - 25 | | 4 - 2 8 - 5 | |
| Weight | g oz | 180 6 | | 180 6 | |
| Ambient temperature | °C °F | 0 / 50 32 / 122 | | -30 / 160 -22 / 320 | |

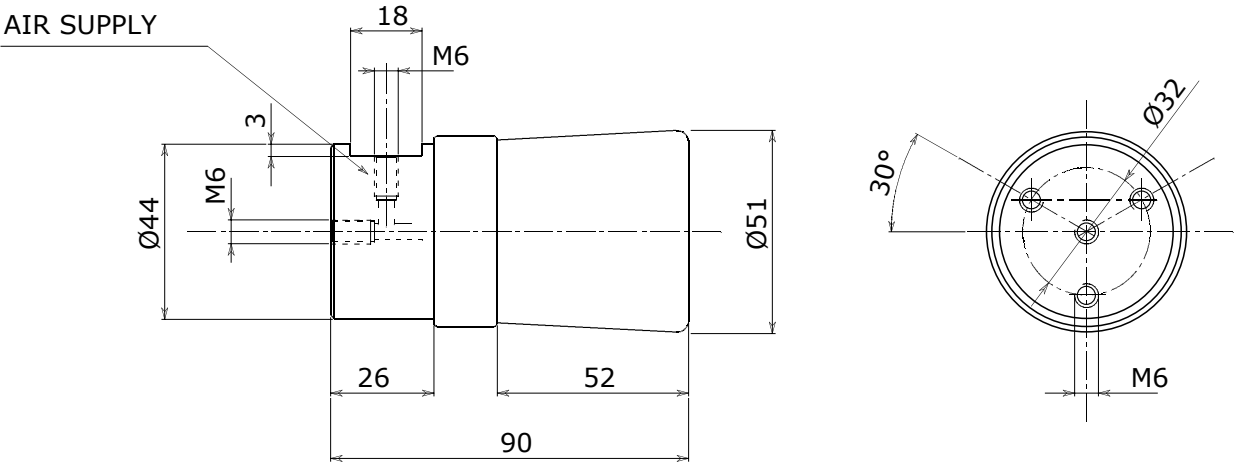
*Preconditioning: end effector must be inflated unrescticted at maximum recommended working pressure for max 30 cycles

**Load capability is evaluated in the working diameter range at maximum allowed pressure

Open/Close Diagram



BLQ 58-85I



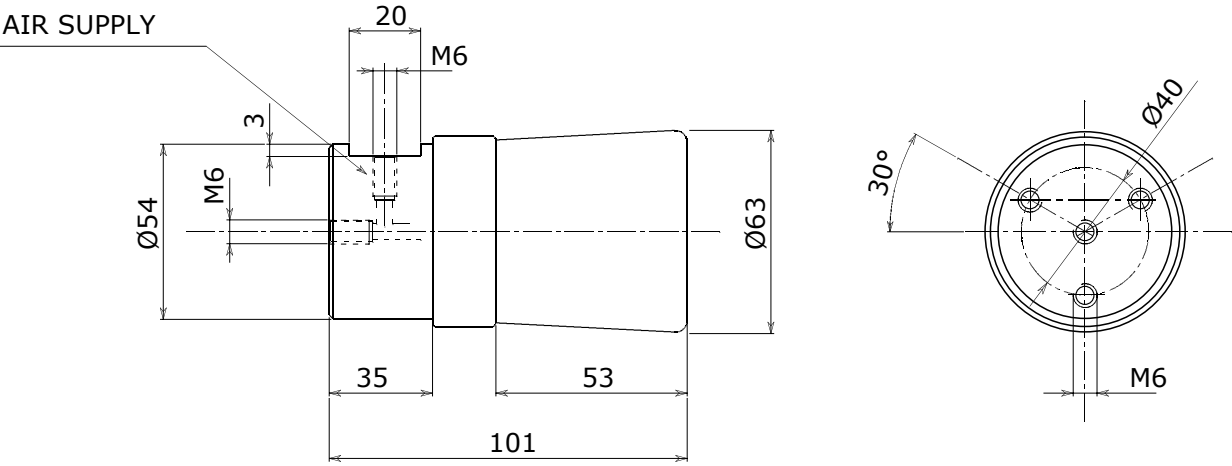
| | | BLQ 58-85I | |
|----------------------------|------------|----------------------|----------------------|
| Working diameter range | mm in | min 58.00 2.28 | max 85.00 3.35 |
| Rubber material | | Neoprene | |
| Rubber bladded length | mm in | 52 2.05 | |
| Deflated diameter | mm in | 51 2.01 | |
| Max restricted pressure | bar psi | 5 70 | |
| Max unrestricted pressure* | bar psi | 2.4 35 | |
| Load capability** | kg lb | 59 - 23 130 - 50 | |
| Weight | g oz | 370 13 | |
| Ambient temperature | °C °F | 0 / 50 32 / 122 | |

*Preconditioning: end effector must be inflated unrestricted at maximum recommended working pressure for max 30 cycles

**Load capability is evaluated in the working diameter range at maximum allowed pressure

Open/Close Diagram





| | | BLQ 70-105I | |
|----------------------------|------------|----------------------|--------------------|
| Working diameter range | mm in | min 70.00 2.76 | max 105 4.13 |
| Rubber material | | Neoprene | |
| Rubber bladded length | mm in | 52 2.05 | |
| Deflated diameter | mm in | 63 2.48 | |
| Max restricted pressure | bar psi | 5 70 | |
| Max unrestricted pressure* | bar psi | 2.4 35 | |
| Load capability** | kg lb | 73 - 30 160 - 66 | |
| Weight | g oz | 610 21.5 | |
| Ambient temperature | °C °F | 0 / 50 32 / 122 | |

*Preconditioning: end effector must be inflated unrestricted at maximum recommended working pressure for max 30 cycles

**Load capability is evaluated in the working diameter range at maximum allowed pressure

Open/Close Diagram





EFFECTO GROUP S.p.A.
Via Roma, 141/143
28017 San Maurizio d'Opaglio (NO) - Italy
Tel. +39 0322 96142 Fax +39 0322 967453
info@effectogroup.com
www.effectogroup.com

