



Unidades de mecanizado Mandrini motorizzati


CARACTERÍSTICAS

- Rodamientos de precisión según pedido
- Paso refrigerante en el centro del tirante
 - Distribuidor rotatorio
- Bloqueo/desbloqueo para un rápido cambio de herramientas

CARATTERISTICHE

- Cuscinetti di precisione a richiesta
- Passaggio refrigerante nel tirante
- Distributori rotanti per refrigerante
- Bloccaggio/sbloccaggio per cambio rapido utensili

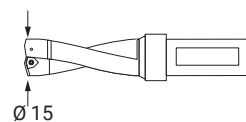
Unidades de mecanizado Mandrini motorizados

 CARGA AXIAL MAX.
CARICO ASSIALE MAX.

2500 N

 PESO

20 Kg



VELOCIDAD HUSILLO / GIRI MANDRINO (50Hz)

G	600	
H	800	6P
I	1000	
J	1200	
K	1500	
L	1800	4P
M	2000	
N	2400	
O	3000	
P	3600	2P
Q	4000	
R	4500	
S	5400	
T	6400	2P
U	7500	
V	8400	

CORREA
DENTADA
CINGHIA
DENTATA

CORREA POLY - V
CINGHIA POLY - V

CAPACIDAD EN
ACERO R=60
CAPACITÀ SU
ACCIAIO R=60

Ø 15

MOTOR / MOTORE

205	=	90	-	1.5 kW	2P
406	=	90	-	1.5 kW	4P
606	=	90	-	1.1 kW	6P

Tamaño máximo 90 / Grandezza massima 90

HUSILLO
MANDRINO

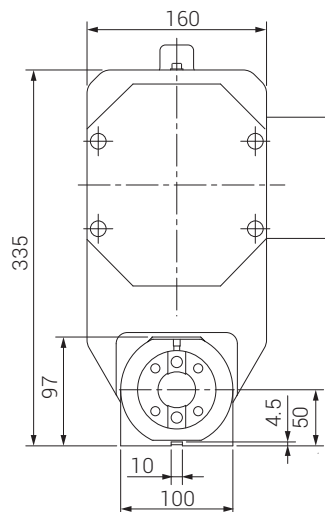
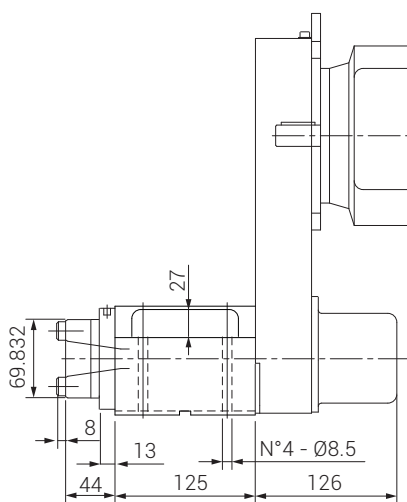
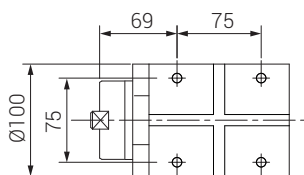
S = ISO 30 DIN 2079

DX 22 /.. /.. /.. /..

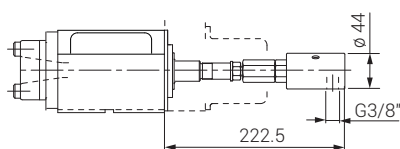
RODAMIENTOS / CUSCINETTI

RC = Rodillos cónicos / Rulli conici

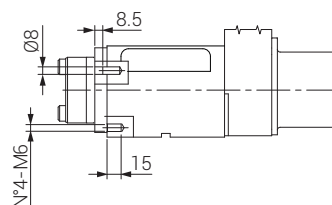
CO = Dos pares contactos oblicuos / Doppia coppia a contatti obliqui



DISPOSITIVO DE REFRIGERACIÓN
DISPOSITIVO DI REFRIGERAZIONE



DESBLOQUEO HIDRÁULICO
PREDISPOSIZIONE PER TESTA MULTIPLA



Unidades de mecanizado Mandrini motorizzati



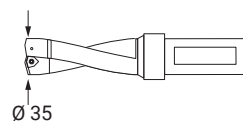
CARGA AXIAL MAX.
CARICO ASSIALE MAX.

9000 N



PESO

40-50 Kg



VELOCIDAD HUSILLO / GIRI MANDRINO (50Hz)

E	400	6P	CADENA CATENA
F	500		
G	600		
H	800	6P	
I	1000		
J	1200		CORREA DENTADA CINGHIA DENTATA
K	1500	4P	
L	1800		
M	2000		
N	2400		
O	3000	2P	
P	3600		
Q	4000		
R	4500		
S	5400	2P	
T	6400		
U	7500		
V	8400		

CAPACIDAD MÁXIMA
EN ACERO R=60
CAPACITÀ MASSIMA
SU ACCIAIO R=60

Ø 35

MOTOR ISO 30 / MOTORE ISO 30

205	=	90	-	1.5 kW	2P
406	=	90	-	1.5 kW	4P
606	=	90	-	1.1 kW	6P

MOTOR ISO 40 / MOTORE ISO 40

207	=	100	-	3 kW	2P
407	=	100	-	2.2 kW	4P
607	=	100	-	1.5 kW	6P

Tamaño máximo 112 / Grandezza massima 112

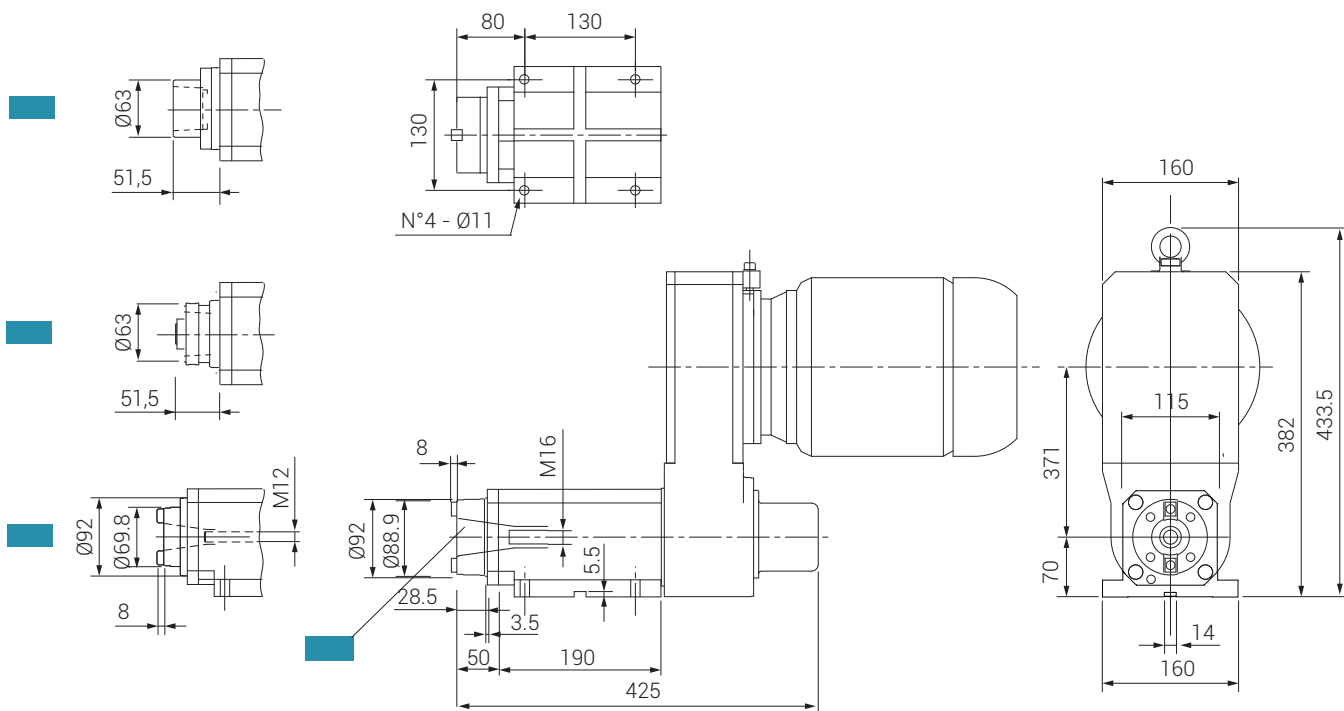
DX 28 /.. /.. /.. /..

HUSILLO MANDRINO

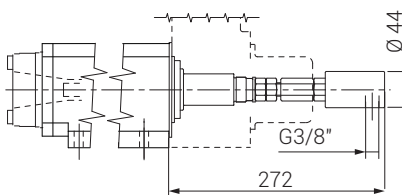
P = HSK 63 A
Q = HSK 63 C
S = ISO 30 DIN 2079
T = ISO 40 DIN 2079

RODAMIENTOS / CUSCINETTI

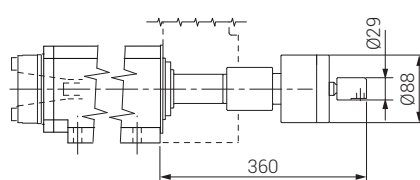
RC = Rodillos cónicos / Rulli conici
CO = Dos pares contactos oblicuos / Doppia coppia a contatti obliqui



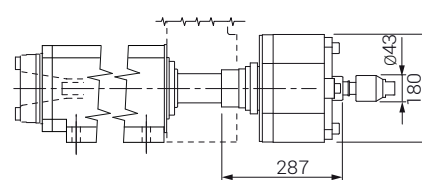
DISPOSITIVO DE REFRIGERACIÓN DISPOSITIVO DI REFRIGERAZIONE



DESBLOQUEO HIDRÁULICO (ISO40) SBLOCCAGGIO IDRAULICO



DESBLOQUEO NEUMÁTICO (ISO40) SBLOCCAGGIO PNEUMATICO



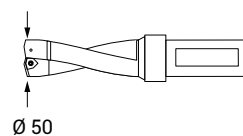
Unidades de mecanizado Mandrini motorizzati

CARGA AXIAL MAX.
CARICO ASSIALE MAX.

15000 N

PESO

90-100 Kg



VELOCIDAD HUSILLO / GIRI MANDRINO (50Hz)

A	160
B	200 R6P
C	250
D	300
E	400 R4P
F	500
G	600
H	800 6P
I	1000
J	1200
K	1500
L	1800 4P
M	2000
N	2400
O	3000 2P
P	3600

CADENA CON REDUCTOR

CATENA CON RIDUTTORE

CORREA DENTADA
CINGHIA DENTATA

CAPACIDAD MÁXIMA EN ACERO R=60

CAPACITÀ MASSIMA SU ACCIAIO R=60

Ø 50

MOTOR ISO 40 / MOTORE ISO 40

207	=	100	-	3 kW	2P
407	=	100	-	2.2 kW	4P
609	=	112	-	2.2 kW	6P

MOTOR ISO 50 / MOTORE ISO 50

209	=	132	-	5.5 kW	2P
410	=	132	-	5.5 kW	4P
611	=	132	-	4 kW	6P

Tamaño máximo 132 / Grandezza massima 132

DX 38 /.. /.. /.. /..

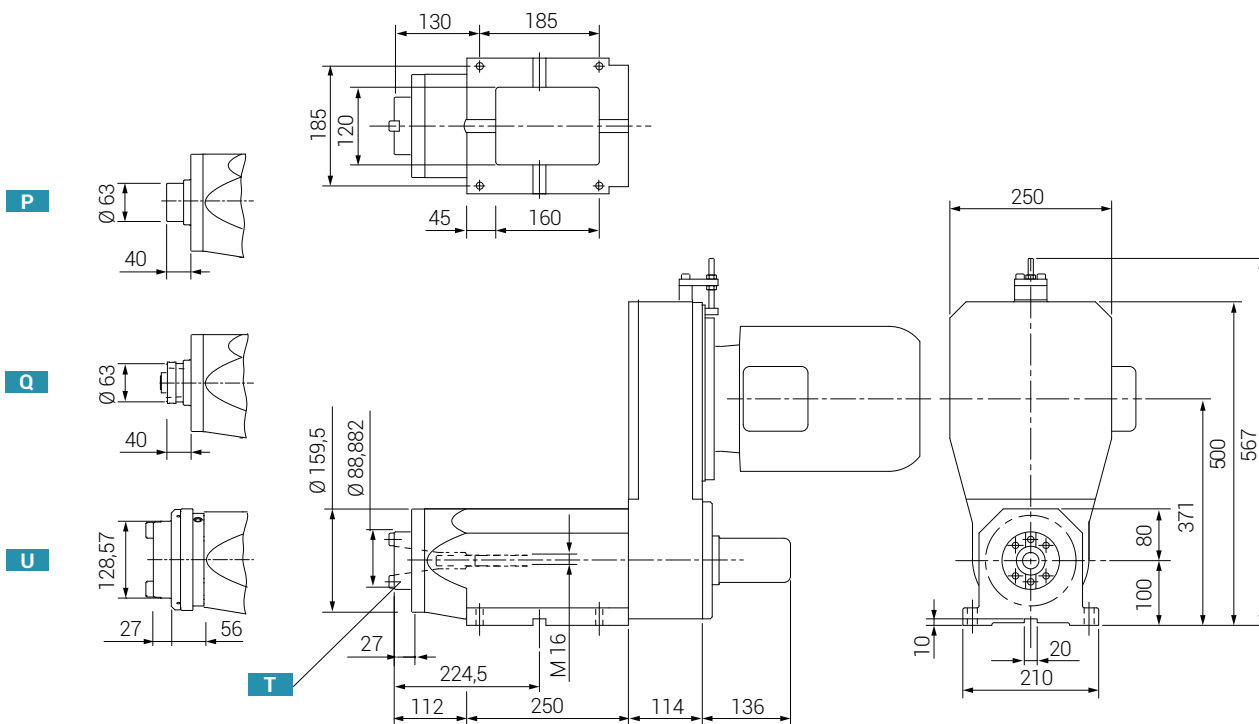
HUSILLO MANDRINO

P = HSK 63 A
Q = HSK 63 C
T = ISO 40 DIN 2079
U = ISO 50 DIN 2079

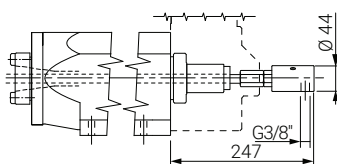
RODAMIENTOS / CUSCINETTI

RC = Rodillos cónicos / Rulli conici

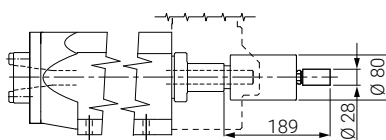
CO = Contacto oblicuos / Contatti obliqui



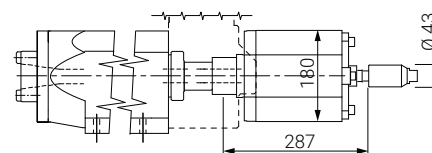
DISPOSITIVO DE REFRIGERACIÓN DISPOSITIVO DI REFRIGERAZIONE



DESBLOQUEO HIDRÁULICO SBLOCCAGGIO IDRAULICO



DESBLOQUEO NEUMÁTICO SBLOCCAGGIO PNEUMATICO



Unidades de mecanizado Mandrini motorizzati



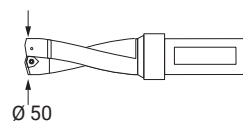
CARGA AXIAL MAX.
CARICO ASSIALE MAX.

25000N



PESO

190 Kg



VELOCIDAD HUSILLO / GIRI MANDRINO (50Hz)

A	160	
B	200	R6P
C	250	
D	300	
E	400	R4P
F	500	
G	600	
H	800	6P
I	1000	
J	1200	
K	1500	4P
L	1800	
M	2000	
N	2400	
O	3000	2P
P	3600	

CADENA CON
REDUCTOR
CATENA CON
RIDUTTORE

CORREA
DENTADA
CINGHIA
DENTATA

CAPACIDAD EN ACERO R=60

CAPACITÀ
SU ACCIAIO R=60
Ø 50

MOTOR / MOTORE

213	=	132	-	7.5 kW	2P
412	=	132	-	7.5 kW	4P
611	=	132	-	5.5 kW	6P

Tamaño máximo 180 / Grandezza massima 180

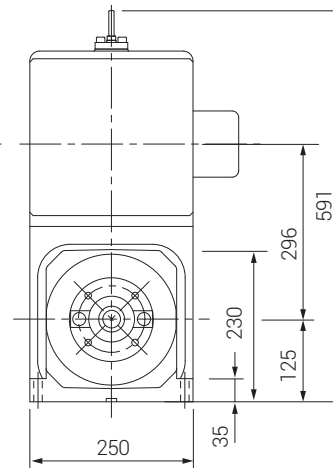
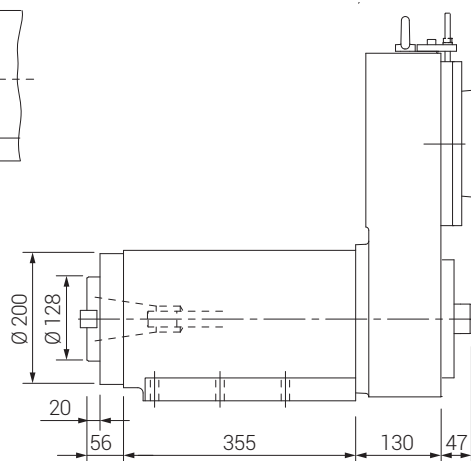
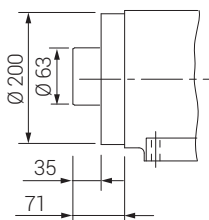
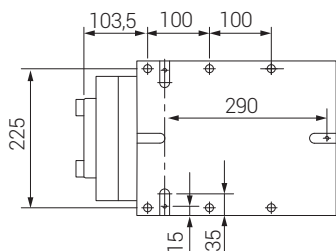
HUSILLO MANDRINO

P = HSK 63 A
U = ISO 50 DIN 2079

DX 58 /.. /.. /.. /..

RODAMIENTOS / CUSCINETTI

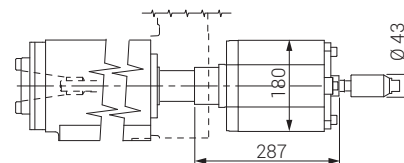
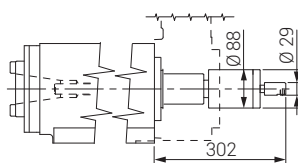
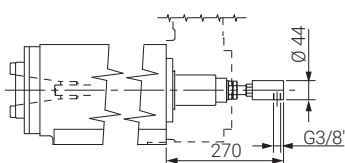
RC = Rodillos cónicos / Rulli conici
CO = Contacto oblicuos / Contatti obliqui



DISPOSITIVO DE REFRIGERACIÓN
DISPOSITIVO DI REFRIGERAZIONE

DESBLOQUEO HIDRÁULICO
SBLOCCAGGIO IDRAULICO

DESBLOQUEO NEUMÁTICO
SBLOCCAGGIO PNEUMATICO



Unidades de mecanizado Mandrini motorizzati



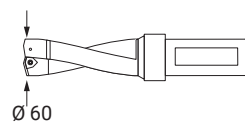
CARGA AXIAL MAX.
CARICO ASSIALE MAX.

40000 N



PESO

625 Kg



Ø 60

VELOCIDAD HUSILLO / GIRI MANDRINO (50Hz)

G	600	
H	800	6P
I	1000	
J	1200	
K	1500	4P
L	1800	
M	2000	
N	2400	
O	3000	2P
P	3600	

CORREA
DENTADA
CINGHIA
DENTATA

CAPACIDAD
EN ACERO R=60
CAPACITÀ
SU ACCIAIO R=60
Ø 60

MOTOR / MOTORE

210	=	180	-	22 kW	2P
411	=	180	-	18 kW	4P
612	=	180	-	15 kW	6P

Tamaño máximo 180 / Grandezza massima 180

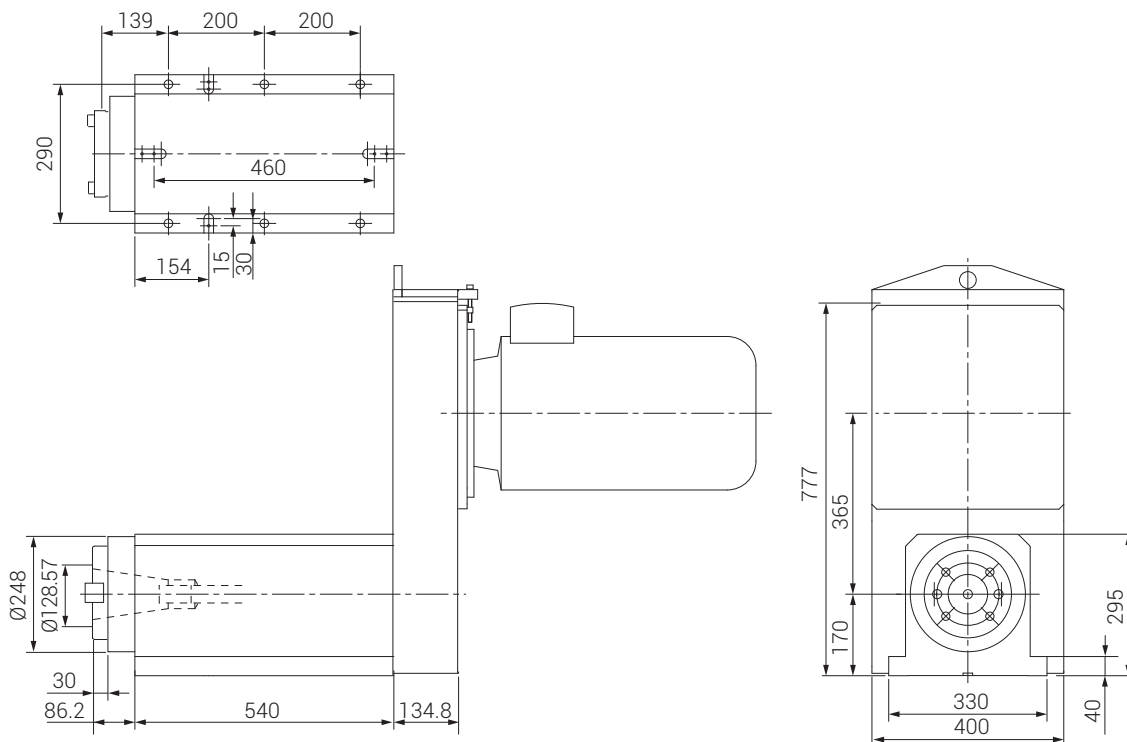
HUSILLO MANDRINO

U = ISO 50 DIN 2079

DX 88 /.. /.. /.. /..

RODAMIENTOS / CUSCINETTI

RC = Rodillos cónicos / Rulli conici
CO = Contacto oblicuos / Contatti obliqui



DISPOSITIVO DE REFRIGERACIÓN DISPOSITIVO DI REFRIGERAZIONE

